



Aldermans Hill, Palmers Green, London, N13
Chain Free £500,000 Leasehold

Anthony Webb
ESTATE AGENTS

Aldermans Hill, Palmers Green, London, N13

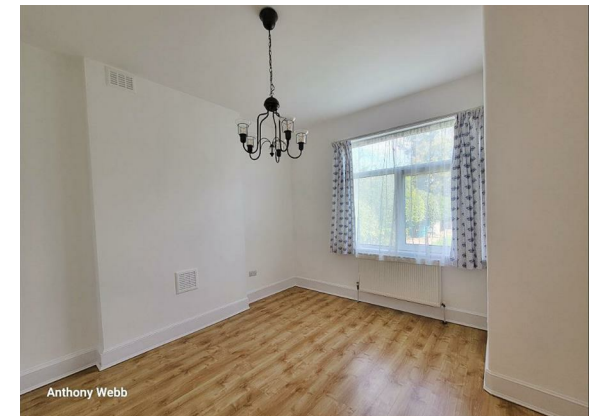
A truly stunning two double bedroom converted flat occupying the entire ground floor of this imposing Edwardian semi-detached property opposite Broomfield Park. This fantastically proportioned property offers an impressive 1055sq ft of bright and airy living space. The property also benefits from a further amazing 1100sq ft of cellar storage space with a ceiling height of 5ft 8 inches.

The property is located on Alderman's Hill with its vibrant range of shops, restaurants and bakeries. It is also a short walk to Palmers Green mainline station into Moorgate and Green Lane's wealth of amenities and bus/road routes into London and beyond.

Secure communal entrance • Impressive hallway with original tessellated tiled floor and door to cellar • Spacious living room with bay window and feature fireplace • Fitted kitchen with door to side return and shared garden • Good size bath/shower room • Main bedroom with sliding doors to shared rear garden • Second double bedroom • Double glazing • Gas central heating • Parking space • Well maintained shared (between three flats) rear garden.

Remaining lease-113 years
Ground rent £100 p.a
Service charge £0
Enfield council tax band E

- Two double bedrooms
- Spacious living room
- Impressive entrance hallway
- Fitted kitchen
- Bath/shower room
- Parking space
- Fantastic cellar storage space
- Shared garden





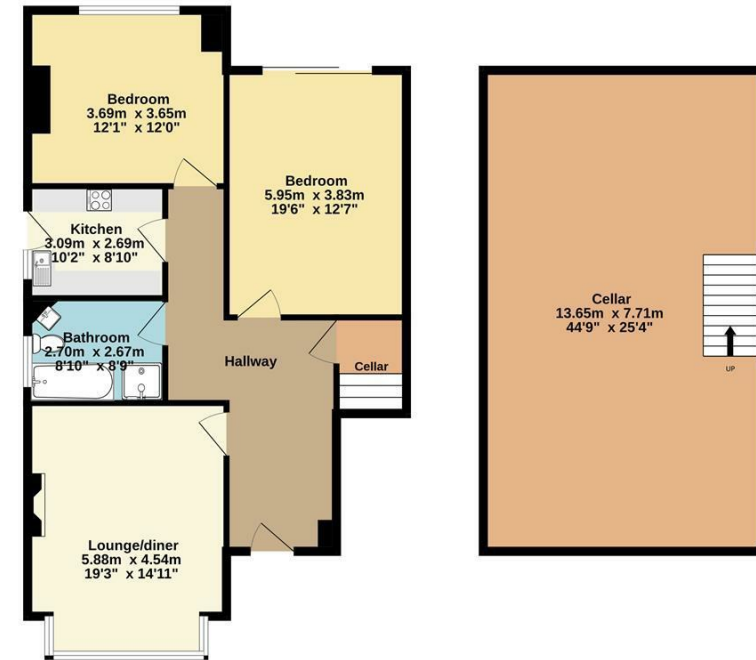
Aldermans Hill Palmers Green London N13 4PT

Tenure: Leasehold
Gross Internal Area: 1055.00 sq ft



Energy Efficiency Rating		Current	Potential
Very energy efficient - lower running costs			
(92 plus) A			
(81-91) B			
(69-80) C			
(55-68) D			
(39-54) E			
(21-38) F			
(1-20) G			
Not energy efficient - higher running costs			
England & Wales		EU Directive 2002/91/EC	
Environmental Impact (CO ₂) Rating		Current	Potential
Very environmentally friendly - lower CO ₂ emissions			
(92 plus) A			
(81-91) B			
(69-80) C			
(55-68) D			
(39-54) E			
(21-38) F			
(1-20) G			
Not environmentally friendly - higher CO ₂ emissions			
England & Wales		EU Directive 2002/91/EC	

Ground floor
98.0 sq.m. (1055 sq.ft.) approx.



TOTAL FLOOR AREA: 98.0 sq.m. (1055 sq.ft.) approx.
While every attempt has been made to ensure the accuracy of the floorplan contained herein, measurements of doors, windows, rooms and any other items are approximate and no responsibility is taken for any error, omission or misstatement. This plan is for illustrative purposes only and should be used as a guide only by any prospective purchaser. The services, systems and appliances shown have not been tested and no guarantee as to their operability or efficiency can be given.
Made with MergoX ©2025

Property particulars as supplied by Anthony Webb Estate Agents are set out as a general outline in accordance with the Property Misdescriptions Act (1991) only for the guidance of intending purchasers of lessees, and do not constitute any part of an offer or contract. Details are given without any responsibility, and any intending purchasers, lessees or third parties should not rely on them as inspection or otherwise as to the correctness of each of them. We have not carried out a structural survey and the services, appliances and specific fittings have not been tested. All photographs, measurements, floor plans and distances referred to are given as a guide only and should not be relied upon for the purchase of carpets or any other fixtures statements or representations of fact, but must satisfy themselves by or of fittings, gardens, roof terraces, balconies and communal gardens as well as tenure and lease details cannot have their accuracy guaranteed for intending purchasers. Lease details, service ground rent (where applicable) are given as a guide only and should be checked and confirmed by your solicitor prior to exchange of contracts. no person in the employment of Anthony Webb has any authority to make any representation or warranty whatever in relation to this property.

348 Green Lanes, Palmers Green, London N13 5TJ
020 8882 7888
palmersgreen@anthonywebb.co.uk
anthonywebb.co.uk

Anthony Webb
ESTATE AGENTS